

# Tick Borne Diseases

## In New England



Bullseye rash- common symptom of Lyme disease and STARI



Skin lesions- common symptom of Tularemia



**Dog Tick**

(*Dermacentor variabilis*)

### Rocky Mountain Spotted Fever

**Agent:** *Rickettsia rickettsii*

**Symptoms:** fever, "spotted" rash, headache, nausea, vomiting, abdominal pain, muscle pain, lack of appetite, red eyes

**Affected Species:** humans, dogs

### Brown Dog Tick

(*Rhipicephalus sanguineus*)



### Tularemia

**Agent:** *Francisella tularensis*

**Symptoms:** fever, skin lesions in people, face and eyes redden and become inflamed, chills, headache, exhaustion

**Affected Species:** humans, rabbits, rodents, cats, dogs, sheep, many mammalian species



**Lone star tick**

(*Amblyomma americanum*)

### Ehrlichiosis

**Agent:** *Ehrlichia chaffeensis* and *Ehrlichia ewingii*

**Symptoms:** fever, headache, chills, muscle pain, nausea, vomiting, diarrhea, confusion, red eyes

**Affected Species:** humans, dogs, cats

### Anaplasmosis

**Agent:** *Anaplasma phagocytophilum*

**Symptoms:** fever, severe headache, muscle aches, chills and shaking, nausea, vomiting, abdominal pain

**Affected Species:** humans, dogs, horses, cows

### Babesiosis

**Agent:** *Babesia microti*

**Symptoms:** (many show none), fever, chills, sweats, headache, body aches, loss of appetite, nausea

**Affected Species:** humans

### Southern Tick-Associated Rash Illness (STARI)

**Agent:** *Borrelia lonestari*

**Symptoms:** "bullseye" rash, fatigue, muscle pains, headache

**Affected Species:** humans

### Lyme Disease

**Agent:** *Borrelia burgdorferi*

**Symptoms:** "bullseye" rash (humans only), fever, aching joints, headache, fatigue, neurological involvement

**Affected Species:** humans, horses, dogs, many others

### Borrelia miyamotoi Disease

**Agent:** *Borrelia miyamotoi*

**Symptoms:** fever, chills, headache, body and joint pain, fatigue

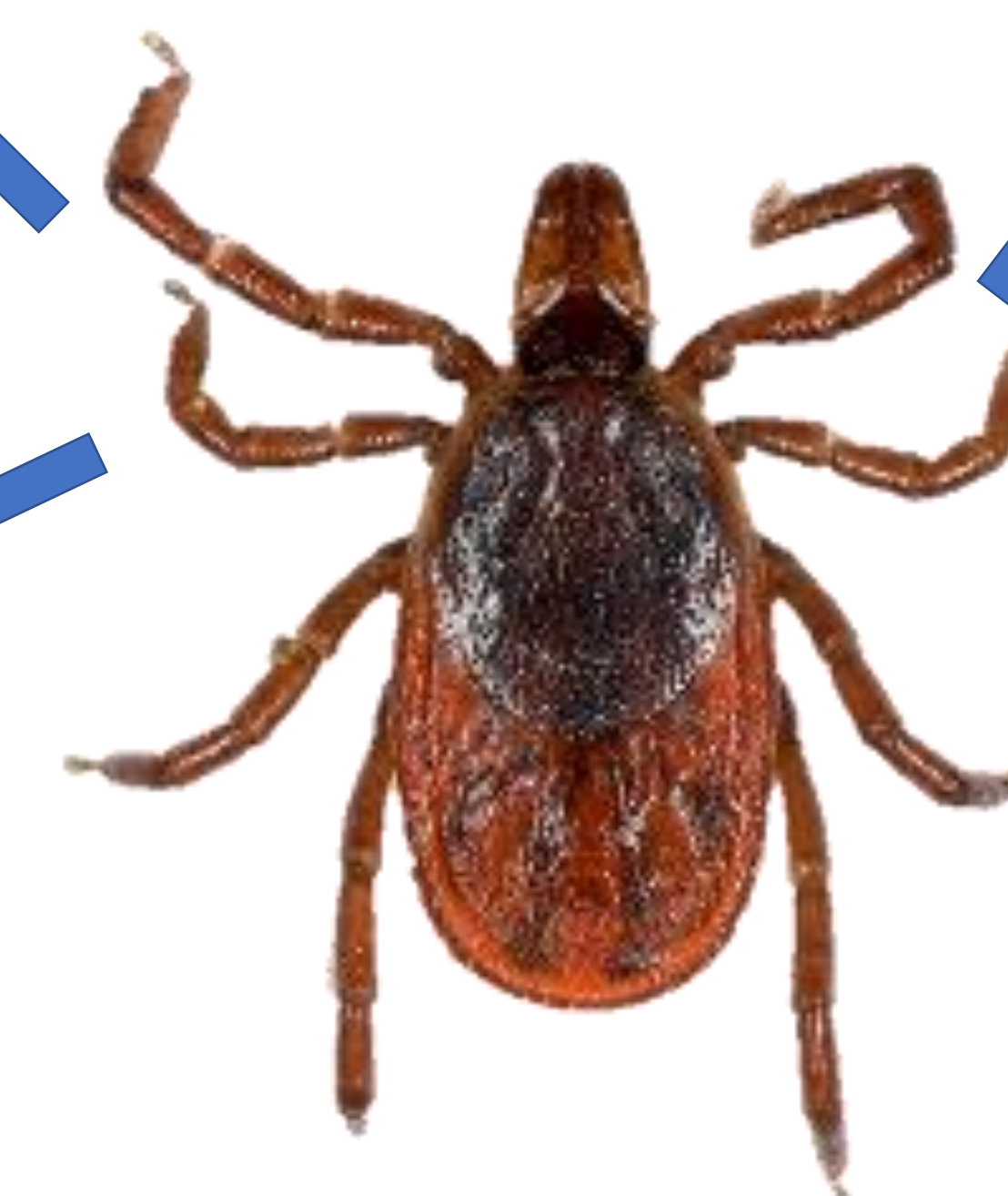
**Affected Species:** humans

### Powassan Virus

**Agent:** Powassan Virus

**Symptoms:** (many show none), fever, headache, vomiting, weakness, confusion, loss of coordination, speech difficulties, seizures

**Affected Species:** humans



**Deer Tick**

(*Ixodes scapularis*)